

CHASSIS COMPONENTS

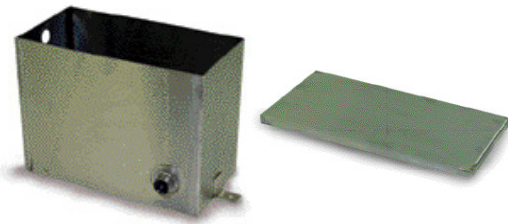
Molded Plastic Float Tanks



- Molded polypropylene
- 7 liter size: 13" x 5" x 6"
- 1 gallon size: 10" x 5" x 8"
- No holes for max flexibility
- 1 gallon tank has tight-fitting lid, included
- 7 liter tank lid is snap-on & sold separately

Part No.	Original No.	Description
8.710-026.0	343002	7-Liter Tank Only
8.710-027.0	343003	7-Liter Tank Lid
8.710-028.0	343004P	1-Gallon Tank w/ Lid

Stainless Steel Float Tank



- Fully welded and water tight
- 2.8 gallon capacity
- 12" x 9" x 6"
- 16 gauge #303 stainless steel
- 1/2" full coupling (SS) inlet/outlet
- Convenient mounting tabs

Part No.	Original No.	Description
8.710-029.0	343006	Stainless Steel Float Tank
8.710-034.0	343016	Stainless Steel Lid

9 Gallon Diesel Fuel Tank



- Strap or Bolt mount (4/5/16" inserts in bottom)
- Metal inset 3/8" inlet/return lines
- Black - Crosslinked PE
- Vented fuel cap
- Filler neck doesn't extend beyond tank wall
- Compact Size: 19-3/4" L x 12" W x 10-1/2" H

Part No.	Original No.	Description
8.710-142.0	344735	9 Gallon Fuel Tank - Plastic

NOTE: Includes fuel cap

Fuel Caps



- For gas or diesel fuel tanks
- Fits standard 2-1/4" fuel necks

Part No.	Original No.	Description
8.710-137.0	344725	Fuel Cap
8.701-700.0	091520	Fuel Cap with Gauge 10"

Fuel Tanks

- EPA/CARB compliant
- Seamless one-piece construction of marine grade, UV-protected polyethylene
- Built-in reserve (When gauge reads Empty, tilt to access additional fuel!)
- 2-Stage click when closed fuel cap
- 90° fuel withdrawal fitting
- Easy-to-read sight gauge
- 4 shapes & capacities from which to choose



8.751-293.0

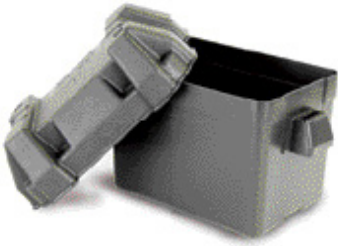


8.751-294.0

Part No.	Gallons	Height	Length	Width
8.751-294.0	6.0	10.0"	21.18"	13.5"
8.751-295.0	7.5	11.10"	20.0"	14.25"
8.751-296.0	12.0	14-3/4"	20-3/8"	13-3/4"
8.751-293.0	12.0	11.0"	24-1/4"	18.0"

Battery Boxes with Cover, Marine Style

Protect batteries on pressure washers, boats or other industrial equipment.



- Attractive molded polypropylene
- Complete with hold-down cleats and strap for cover

Small:
L: 8-1/2" W: 6" H: 8-1/2"
Large: L: 11-1/4"
W: 7-3/4" H: 10-3/4"

Part No.	Original No.	Description
9.802-090.0	306625	Small Box
9.802-075.0	306627	Large Box

Hand Tote II



- Strong 1" square steel tubing
- Rubber mounting feet for stability
- Compact size – 12" W x 19" H x 17" D
- Durable gloss black polyurethane finish

Electric: 1.5 HP - 5.0 HP
56C Motor

Gas Eng:
4.0 HP - 6.5 HP Honda
3.0 HP - 6.0 HP B&S /
B&S Vanguard engines

Part No.	Original No.	Description
8.905-567.0	565230X	Hand Tote II

Complete Wheels



8.711-901.0



9.802-270.0

- High quality pneumatic, and semi pneumatic
- Fits 5/8" shaft



9.802-271.0



8.712-762.0

Part No.	Original No.	Description
8.711-901.0	4-0304	10" Mag
9.802-270.0	4-0303	10" Steel Rim w/ Tube
9.802-271.0	4-0307	13" Steel Rim
8.712-762.0	480115	10" White steel rim, 3/4" Hub Tubeless
8.711-905.0	4-03071	6" Steel Rim Foam Filled



Interchangeable Bearings

Part No.	Original No.	Description
8.700-484.0	076504	5/8" Bore Bearing
8.700-486.0	076505	3/4" Bore Bearing
8.700-485.0	076504P	5/8" Nylon Bearing

Hub Caps

Part No.	Original No.	Description
8.700-183.0	071625	3/4" Hub cap
8.700-184.0	071627	5/8" Hub cap

For best value,
look for Legacy and A+ products
throughout the catalog

